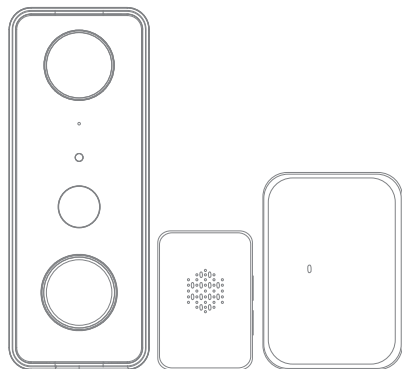


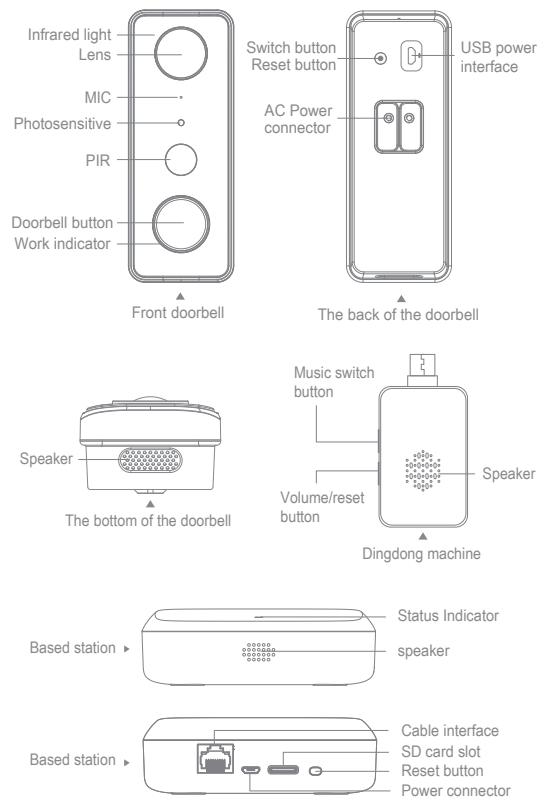
Low Power Intelligent AC Video Doorbell

Product instruction manual and
three packs of cards



Please read the manual carefully before using the product

Product description



Packing list

Set 1: Video doorbell + Ding Dong

- Video doorbell×1
- Synopsis×1
- Shockproof sponge pad×1
- Angle bracket (optional)
- Dingdong machine×1
- Disassemble the needle×1
- AC Power extension cord×2

Set 2: Video doorbell + Base station

- Video doorbell×1
- Synopsis×1
- Shockproof sponge pad×1
- Angle bracket (optional)
- Base station×1
- Disassemble the needle×1
- AC Power extension cord×2

Set 2: Video doorbell + Base station + Ding Dong

- Video doorbell×1
- Synopsis×1
- Shockproof sponge pad×1
- Angle bracket (optional)
- Base station×1
- Screw pack×1
- Disassemble the needle×1
- AC Power extension cord×2
- Dingdong machine×1
- Power cord×1

Doorbell indicator light description

1. The device is powered on, and the device is waiting for network distribution. —The blue ring light flashes slowly.
2. The device fails to connect to the network—the blue ring light flashes quickly.
3. The equipment is successfully distributed to the network—the blue ring light is on.
4. The device is in normal standby mode—the blue ring light is always off.
5. The device wakes up—blue circular breathing light.
6. The doorbell is pressed—blue circular breathing light.
7. The blue ring light flashes slowly during the OTA upgrade of the device.
8. The device is charging—the green ring light is always on.
9. The device is fully charged—the green ring light goes out.
10. The device is charging abnormally—the green ring light flashes quickly.
11. The equipment is abnormal—the blue ring light is always on (always on).

Doorbell button operation instructions

Power on: Long press the switch button and the doorbell button at the same time for 2 seconds to turn on the device.

Shut down: Press and hold the switch button + doorbell button for 5 seconds, the device will shut down.

Reset : Long press the reset button for 5 seconds.

Installation Notes

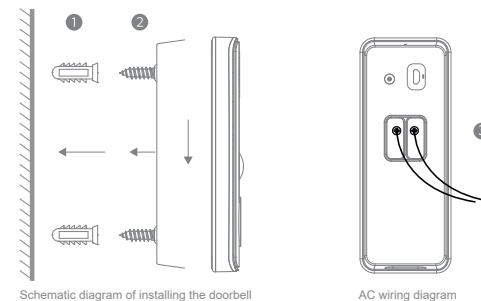


Mounting screws : Use two to mount the bracket on the wall, and the other for spare.

Wall Anchor : When installing on concrete, plaster or brick, you can choose to push two anchors into your wall to drill; In the hole, the other is used for spare.

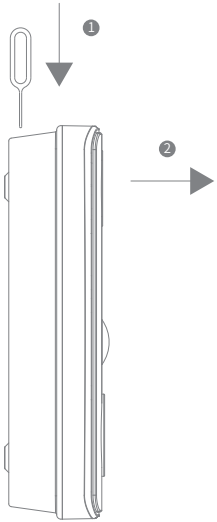
Terminal screws : After connecting the wires to the terminals on the back of the smart doorbell, tighten the two terminal screws.

1. Drive the wall anchor into the wall according to the positioning;
2. Fix the back plate to the wall anchor with mounting screws;
3. Put the doorbell down on the back panel.



Disassembling the doorbell charging instructions

- 1. Insert the disassembly needle into the hole and press down firmly; as shown ❶ ;
- 2. Pull out the doorbell forward; as shown ❷ ;
- 3. Plug in the USB cable to charge.



Preparation for use

- ❶ When you get this product, please turn on the device first;use the configured power cord to fully charge the device;

At the same time, make sure that the phone is connected to a Wi-Fi network in the 2.4GHz frequency band.

- ❷ Download and open the App;
Search for "Tuya Smart" or "Smart Life" in the app store or scan the Download and install the App by QR code;



【Tuya Smart】



【 Smart Life】

Base station connection

(If you do not purchase a base station, this step can be ignored)

- ❶ Use a network cable to connect the base station to the LAN interface of the wireless router;
- ❷ The red light of the indicator light is always on. After the startup is completed, the base station enters the state of waiting for network configuration, and the red light of the indicator flashes.



* Requires a wireless router connected to the Internet; requires at least 2MB of uplink network.

Base station network access settings

(If you do not purchase a base station, this step can be ignored)

- ❶ Add base station
Open the Tuya Smart App and click the add button "+" in the upper right corner of the page.

Follow the instructions of the program to complete the addition of the base station.

- ❷ Add camera

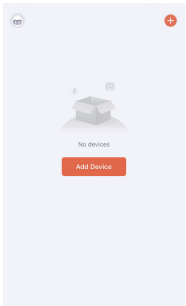
Enter the base station page, click the add sub-device button below, the base station enters the state of adding sub-devices, referring to Indicator light The green light starts to flash;

Press the camera switch/distribution button, the device is turned on and enters the state of waiting for network configuration, you will listen When the network prompt sound is reached, the red light starts to flash at the same time;

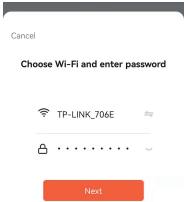
You will hear the prompt tone of successful network configuration, the successfully added sub-device appears on the program, and the camera The upper indicator light turns green.

Doorbell network access settings

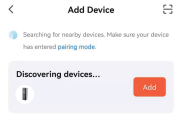
- Open the "Home" of the Tuya Smart App,
Click the add button "+" in the upper right corner of the page;



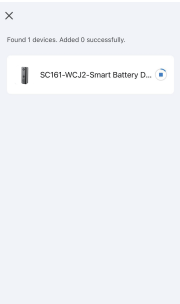
- Enter the connected WiFi password and click "Next";



- In the "Add Device" page, select "Add";



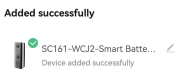
- The device is connecting, waiting to connect;



- Click "Next";



- The connection is successful.



Dingdong machine pairing

(If you do not purchase Dingdong, this step can be ignored)

- Please power on the Dingdong machine first;

- Long press the reset button for 5 seconds, the indicator light of the Dingdong machine flashes slowly, and the Dingdong machine sends out "Ding ding ding ding dong", Dingdong The machine enters the pairing state;

- Press the doorbell button to pair, the Dingdong machine will send out "Dingdong", and the indicator light will go out, the Dingdong machine is paired successfully.

FCC Caution

This device complies with part 15 of the FCC Rules. Operation is subject to the following two conditions:

(1) This device may not cause harmful interference.

(2) this device must accept any interference received, including interference that may cause undesired operation.

Any Changes or modifications not expressly approved by the party responsible for compliance could void the user's authority to operate the equipment.

Note: This equipment has been tested and found to comply with the limits for a Class B digital device, pursuant to part 15 of the FCC Rules. These limits are designed to provide reasonable protection against harmful interference in a residential installation. This equipment generates uses and can radiate radio frequency energy and, if not installed and used in accordance with the instructions, may cause harmful interference to radio communications. However, there is no guarantee that interference will not occur in a particular installation. If this equipment does cause harmful interference to radio or television reception, which can be determined by turning the equipment off and on, the user is encouraged to try to correct the interference by one or more of the following measures:

- Reorient or relocate the receiving antenna.

- Increase the separation between the equipment and receiver.

- Connect the equipment into an outlet on a circuit different from that to which the receiver is connected.

- Consult the dealer or an experienced radio/TV technician for help.

FCC Radiation Exposure Statement

This equipment complies with FCC radiation exposure limits set forth for an uncontrolled environment. This equipment should be installed and operated with minimum distance 20cm between the radiator & your body.